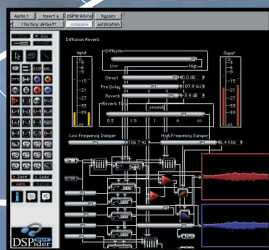


DUY

product line

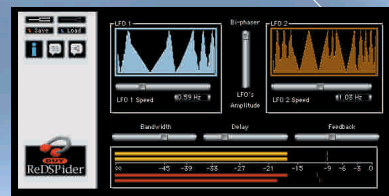
DUY DSPider

DSPider is a modular plug-in creator for TDM. It consists of 40 modules which can be linked by the user in countless different ways. The list of these modules ranges from simple operators such as addition, subtraction and multiplication to multi-functional modules like filters, oscillators, waveshapers, envelope followers, pitch trackers, sample-and-hold, etc. DSPider allows the development of virtually any type of existing processing device, including those that don't currently exist in the marketplace. DSPider also provides a preset library with over 220 plug-ins.



DUY ReDSPider

ReDSPider is the first plug-in library for the Digidesign TDM Bus™. It allows you to load and use any of DSPider's 220+ presets, which include compressors, limiters, reverbs, noise gates, expanders, equalisers, de-essers, panners, levellers, flangers, delays, multiband and multi-effect processors, 3D effects, synth sounds, sound enhancers, de-noisers, dithering, etc.



DUY Shape

DUY Shape is a sound enhancer based on the exclusive FDWS algorithm, featuring 3-band smooth filters with full audio range continuous crossover points and 3 independent user-defined shapers with virtually infinite resolution accuracy.



DaD Valve

DaD Valve is a physical-modelling-based classic tube simulator for digital audio systems, featuring the most popular types of valves - triode, tetrode and pentode - with a full range of biasing and operating levels. This proprietary system also provides absolute and independent control over both spectral and dynamic responses, with a total of 1600 different configurations.



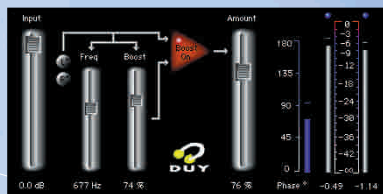
DaD Tape

DaD Tape simulates the sound of analog tapes for digital audio systems. It features physical modelling of the four most representative tape recorders on the market, as well as the three most common noise reduction systems and three different tape speeds (7 1/2, 15 & 30 ips).



DUY Wide

DUY Wide is a stereo and multichannel spatial enhancer, which allows spatial enhancing and widening of the stereo image, as well as sound placement outside the physical speaker locations. DUY Wide is mono-compatible.



Max DUY

Max DUY is a sound level maximizer based on DUY's exclusive ILO algorithm, featuring seamless level maximizing, zero harmonic distortion even at low frequencies and release-free operation which avoids any unwanted pumping effects.

